



Always Supplying Advanced Flexible Excellence





We are the inventors of the worlds first fixed, polymer safety barrier system, with over 30 years experience in plastic extrusion and we've grown in to a world leader in workplace safety solutions.





A-SAFE - THE WORLD'S FIRST...

We are the world's first specialist manufacturer of fixed, polymer safety barriers; and were formed in Halifax, England in 1984.

Our specially engineered products offer first class protection, unique benefits, and huge long-term cost savings. We are leaders in research and development in the barrier industry, as we ensure that our product range is always the best on the market. And because we develop, manufacture, produce, test and distribute our products ourselves, the levels of quality assurance that we provide to you make us your number one choice for workplace barrier systems. Our consultancy service is something to be reckoned with, and we project manage your A-SAFE installations with finesse and expertise.

You will find A-SAFE products in environments such as aviation, food and beverage, automotive, pharmaceutical, distribution and warehousing, and we're proud to have some great names that we're able to call clients. Blue-chip companies like Nestlé, VW Group, Coca-Cola, Heathrow Airport, Kimberly-Clark, Morrisons, DHL, Jaguar Land Rover, Smurfit Kappa, McCains and BMW are all satisfied, returning customers.



A-SAFE employs over 100 people in the UK, Germany, France, America, Italy, Australia, Portugal, Scandinavia and throughout the world.



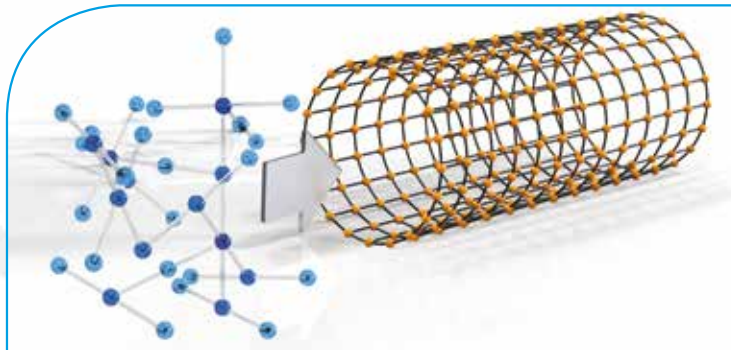
With offices around the world, we've never forgotten our roots, and when you contact us, you'll get a local service, from a global company.

Our material has its own built-in memory. It doesn't crumple, and doesn't dent. It flexes upon impact, absorbing energy and it returns to its original shape.





MATERIALS WITH BUILT IN MEMORY



A three layered material made up of an inner nucleus, central impact absorption zone and outer UV and colour layer.

When you buy from us, you are only ever dealing with the manufacturers of the product. This means that you're in safe hands, with a quality company who invented a quality safety system. We use the latest technologically advanced extrusion lines to make our product range.

Memaplex, is a robust and flexible polyolefin blend of eight materials and rubber additives. It's a three layered material exclusively developed by us.

During the manufacture of **Memaplex**, the molecular structure is re-orientated in to a straight line. This process gives the material its built-in memory and inherent strength. This allows the final product to be flexible; and absorb and dissipate impact, before it returns to its original shape. It's properties mean it's food hygiene approved, chemically resistant and the blend of materials can be adapted to make it suitable for cold storage.

MEMAPLEX™

**MEMAPLEX™
FR**

- Operating temperature between -10°C & 50°C

- Operating temperature between -40°C & 20°C

Any impact force on our barrier is dissipated through the material, with only 20% of it travelling down to the floor. A rigid barrier transfers all of that force to the floor, resulting in damage to your concrete together with costly repairs.



100%

20%



ABSORPTION - YES FLOOR DAMAGE - NO



When our products are hit, they absorb the impact, and reform to their original shape.



Absorption


The **A-SAFE** system is designed to absorb vehicle impact, and dissipate the force throughout the barrier.

Because this happens, it cushions the vehicle and prevents it from getting damaged, and only transfers 20% of the force to the floor. Because the force travels elsewhere, you don't get floor damage.

Reduction in floor damage

Repairing floor damage is not just costly, but very inconvenient. When a rigid barrier is struck by a vehicle it crumples and 100% of the force is sent to the floor, tearing it out from the concrete, and leaving you with an expensive floor repair bill, plus a replacement barrier to buy. Our system eliminates both of these problems, allowing you to quickly carry on with your day to day work.

Using our barriers will give you a dramatic reduction in floor damage. They flex, and don't tear up the floor – so 500m of **A-SAFE** barriers can save you £115,000 in repairs and maintenance compared to conventional steel barriers.



One of the unique features of our safety systems is its parts. How those parts fit together, and what those parts do. The parts also make the products adaptable, and easy to change.





A-SAFE'S SPECIAL FEATURES

Modular

A-SAFE barriers have a modular design with no screws or bolts. It's simple to put together and is installed in a fraction of the time that steel barriers are.

It's an interlocking system, which contains no steel and all the joints flex – enhancing its built-in memory.

Our base plates come with countersunk fixings, so a vehicle won't get damaged if they get too close to the base of the barrier.

Moving Parts

Some of our barriers have moving parts, such as spinning collars, which help to deflect impacts or rollers on our Dock Protection that eliminates friction and wear. Adding touches such as this improves the performance of our barrier system, and further minimises risk.



Many of our barriers have moving parts, such as spinning collars, which help to deflect impacts.



A-SAFE is well known throughout the food manufacture and confectionery industry, as word spreads about our hygienic safety barrier system.





HYGIENIC AND MAINTENANCE FREE

As **Memaplex** doesn't corrode it doesn't need re-painting it's also suitable for hygienic environments.

Corrosion free

Memaplex doesn't rust over time, and doesn't react to chemicals that come in to contact with it. It doesn't corrode, ensuring that it looks its best and performs as it should over its lifetime.

No painting needed

It's outer layer is coloured throughout, meaning that scuffs and scratches don't show and you don't need to spend time and money repainting our barriers.

Hygienic

In environments where hygiene is key, our barriers are a perfect fit. The material is food contact approved, and is 'wipe-clean', so it's easy to keep dirt and bacteria free. This also means that our products are suitable for medical environments and the pharmaceutical industry too.



If you hit an **A-SAFE** barrier, you won't need to re-paint it, as our products are self-coloured throughout the outer layer. They don't chip, rust or corrode, and are easy to wipe clean.

Temperature	MEMAPLEX™	±	-15°C to +50°C
Temperature	MEMAPLEX®	±	-40°C to +30°C
Chemical Resistance			Excellent - ISO / TR 10358
Fire Rating			HB / F
Food Contact			Yes
Toxicity			None
Conductivity			No

Annual Maintenance Cost



Gatwick airport used to spend in excess of £100,000 annually in their north and south baggage handling halls on barrier and floor damage repairs. This figure was slashed to just £3,000 over five years after changing over to A-SAFE barriers.

Total Annual Cost £9,242

Rail & Post Damage **£5,658** per year

Floor Damage **£2,328** per year

Painting Twice **£1,256** per year

Total Cost over 5 Years

£46,210

Total Annual Cost £1,444

Rail & Post Damage

£780 per year

Floor Damage

£664 per year

Total Cost over 5 Years

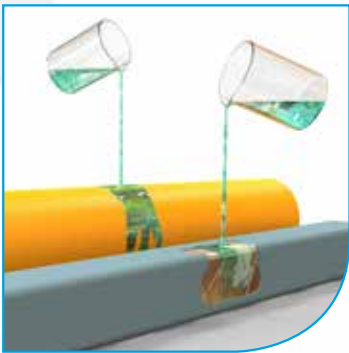
£7,220

**100m Steel
Barrier**

**100m A-Safe
Barrier**



IT'S GREEN & SAVES MONEY



Our barriers won't corrode when they come in to contact with acid or other harmful substances, further improving your CO₂ footprint.



When you choose **A-SAFE** for your safety solutions, the amount of money you save is incredible.

Reduction in floor damage

Because our products absorb impact, it doesn't tear from the floor when there's a collision. As a result, you'll benefit from a reduction in floor damage repair costs from the moment you install **A-SAFE** barrier, and the saving rises dramatically over the following years. When Gatwick installed our products, they saved nearly £300,000 over three years on maintenance costs.

Less parts to replace

Due to its flexible nature the replacement of our damaged rails and posts is significantly less than an Armco steel barrier. In a typical busy environment protected by steel, you will need to replace 20% of its rails and 40% of its posts over a year, compared to just 5% of A-Safe posts in its traffic barrier, and no replacement rails.

Helping the environment and your CO₂ footprint:

Comparing 100m of Steel Armco with 100m of **A-SAFE's** Traffic Barrier, over a 5 year period the difference in CO₂ emissions is obvious. During manufacture, 100m of Steel Armco produces 3863kg of CO₂, whereas 100m of our Traffic Barriers only produces 1766kg. At the end of 5 years, Steel Armco barrier would have created a carbon footprint of 11933kg, where our Traffic Barrier generates just 2530kg, 4.5 times less!



Our huge range of standard products are designed to completely kit out your environment and protect all your applications. We can even design and build something bespoke if you've got a hazard that's not quite the norm, because with A-SAFE we will always fulfil your needs.





THE PRODUCTS

We revolutionised the health and safety barrier industry when we began developing our barrier range.

We provide the best solutions for pedestrian and traffic segregation, protection for walls and structures, and have products that protect machinery and factory equipment. There are gates and accessories that complement our barriers, and the range also consists of dock protection, bollards, and the best racking protection that you can buy.

We also cater for doorways, car parks, and even have a specialised airport barrier range too.

If we can't protect a hazard completely with something from our standard range, we will design a bespoke product to the right specification to fulfil your safety requirements.



Our products are always evolving and new ranges are launched all the time.



The benefits that each one of our products offer is unique, and sets our product range apart from anything else:

- Built-in memory – flexible barrier, returning to its original shape without tearing from the floor, causing dramatic reductions in floor maintenance costs
- UV stabilised (suitable for outdoor use)
- Rust and corrosion free
- Modular design with no screws
- Self coloured (no flaking paint, chips or scratches)
- CO₂ friendly

"I would definitely advise anyone looking for safety solutions to give A-Safe a try. If safety is your job, like mine, then you are always looking for a system like A-SAFE that does what it says and can make your role simpler."
Kimberly-Clark.



Hand Rail



Hand Rail



Pedestrian Barrier



Pedestrian Barrier



Pedestrian Barrier – External



Pedestrian Barrier



Pedestrian Barrier and Swing Gate



Traffic Barrier Single Rail



Traffic Plus



Traffic Plus



Traffic Barrier Single Rail



Dock Roller



Impact Plus



Traffic Barrier Double Rail



Traffic Barrier Double Rail – External



Ground Traffic Barrier



Impact Barrier



Micro Barrier Single Rail



Micro Barrier Double Rail



Truck Stop



Slide Gates



Fire Exit Gate & Hand Rail



Kerb Barrier



Atlas Barrier



Atlas Barrier Mast Protector



Atlas Plus



Bollard Style Column Protector



Post & Rail Column Protector



Bollards



Bollards & Height Restrictor



Height Restrictor



Kick Plate



Multi Post Rack End Barrier



Our standard range offers an incredible amount of protection. However, if you have a hazard that needs something different, we can design and manufacture a product that meets your needs.



iFlex RackGuard



Double Rail Rack End Barrier



Double Rail Rack End Barrier



RackGuard Leg Protecta



RackGuard Leg Protecta



Car Park Barrier



Car Park Barrier with Anti-Climb



A-SAFE Double Rail Armco



Low Level A-SAFE Armco



Swing Gate



Trailer Plates



Wall Buffer



Lift Gate



Hooped Bollard



Atlas Triangle



Atlas Plus



High Level Traffic



Single Rail Rack End Barrier



Atlas Barrier



Pedestrian Barrier



Column Protector



"They are of good quality, very low maintenance and provide excellent protection for pedestrians."
Coca-Cola.



Gate Lock



Pedestrian Barrier



Sign Boards



Slider Plate



CP Column Protector



125 Bollard



Dock Roller



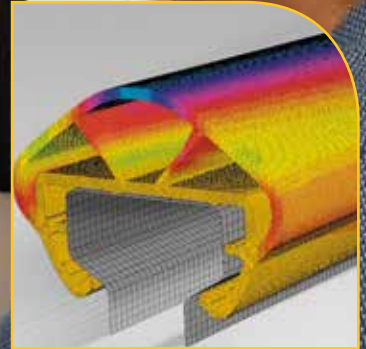
Atlas Plus



Bespoke Pedestrian Barrier



FEA (Finite Element Analysis) consists of a computer model of a design that is stressed and analysed for specific results. We use it in new product design as well as improving existing products.





RESEARCH & DEVELOPMENT

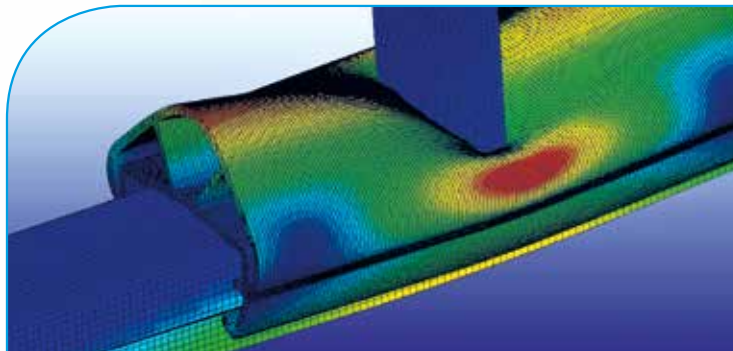
A-SAFE's expertise is second to none, and every product we manufacture goes through a rigorous journey of research and development before it's deemed ready to go out to customers all over the world.

FEA Research

Using the latest FEA and physical testing, our highly qualified and innovative Research and Development team devise solutions and answer problems. The team spends hundreds of hours looking at how our products will cope with varying vehicle weights, angles of impact, dimensions and material properties. It allows them to determine the appropriate product design for **A-SAFE** to develop. Each product is a project for our R&D team, and as **A-SAFE** products



Utilising FEA has allowed us to develop unique attributes to our products that can't be found elsewhere, such as different sized compression hinges on our RackGuard.



continuously evolve, no project will ever be considered complete. FEA allows us to verify any proposed product design, ensuring it will be able to perform beyond the clients specifications prior to manufacturing.

Testing for structural failure, FEA can be used to define any alterations needed to meet new conditions. We use non-linear dynamic FEA software which accounts for plastic deformation as well as testing a material to its fracture and failing point.



Our barriers are thoroughly tested to levels that exceed standards across the world. Our products are independently tested by TÜV, who have also certified our in-house testing equipment.



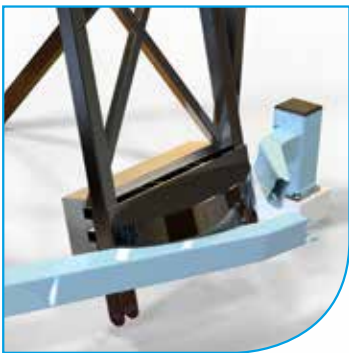


TESTED AND CERTIFIED

We have a brilliant, high performing barrier system, and to keep it like that we test it in-house and independently.

After we complete FEA testing, we make the prototype product on which to perform controlled physical tests. These consist of drop tests and pendulum swing tests using weights to generate different forces of impact, and multi-angle impact tests using work place vehicles.

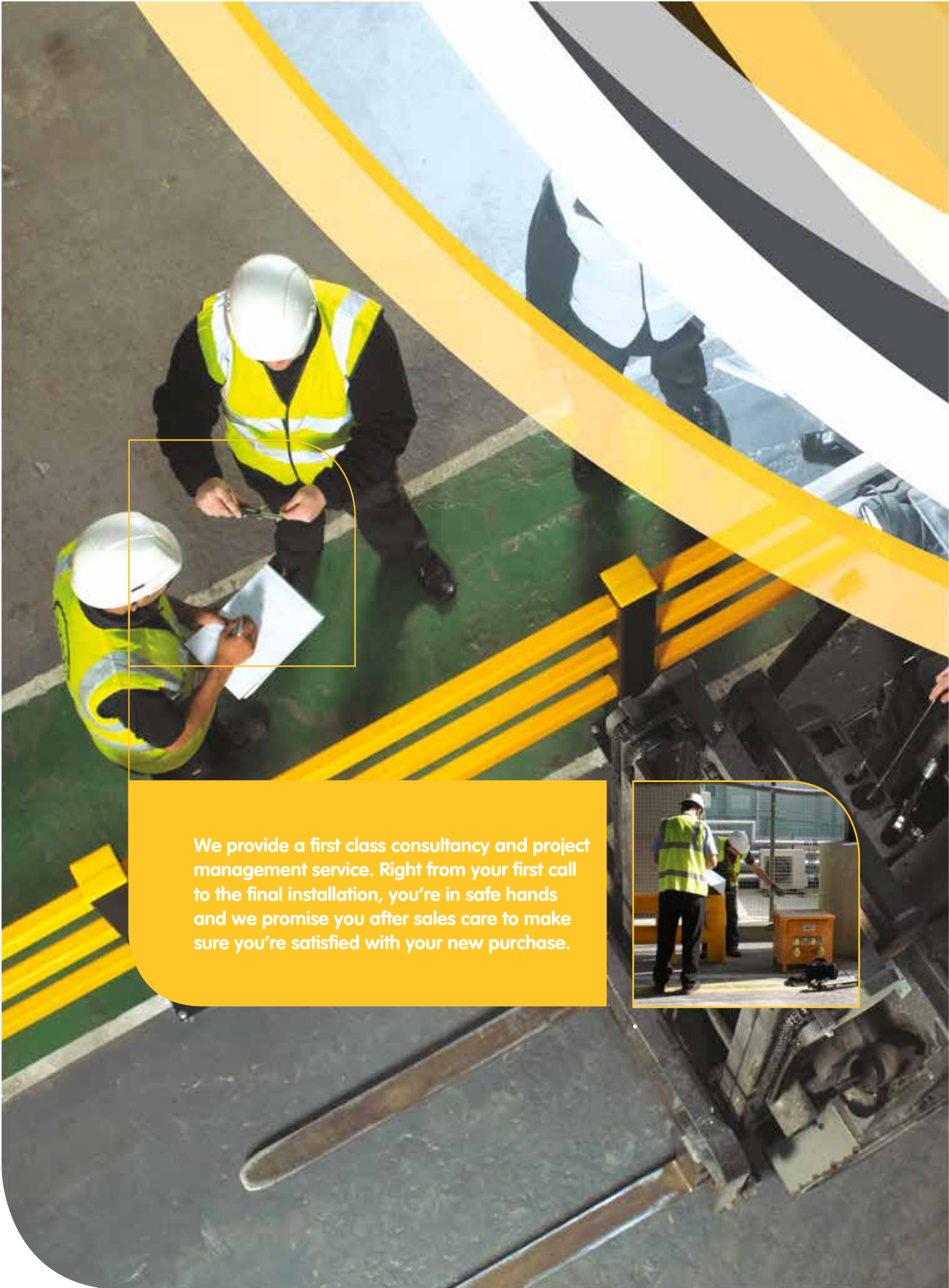
We strenuously test every product in our range up to and beyond latest Health and Safety standards, and other applicable regulations, and where necessary they have been tested and certified as complying with impact loadings stated in relevant British, European and ISO standards.



In similar tests, other plastic barrier systems didn't return to their original shape, and similar steel products buckled and/or tore away at the base.



The majority of our products have been independently tested and certified by TÜV, who also certified our in-house testing apparatus, giving you confidence in the safety that you buy from us.



We provide a first class consultancy and project management service. Right from your first call to the final installation, you're in safe hands and we promise you after sales care to make sure you're satisfied with your new purchase.



STARTING YOUR JOURNEY...

When you need to look at a new safety system, you can count on us to work with you from your initial enquiry, through until after your products have been installed.

Consultation Project Management

Our team will come and meet you and discuss your requirements. We'll look at the areas you need to protect, make recommendations on the most appropriate type of barrier that we can offer, and take care of the design work as part of the quotation.

Working with Architects, specifiers, etc.

We'll liaise with anybody appointed to oversee the management and installation of safety systems. We'll offer exactly the same service level agreements, provided by our Head Offices and appointed partners throughout the world.



We visit you, we measure up, and we discuss your needs and make recommendations. Once we've produced CAD drawings, we'll send them to you for your approval.



When A-SAFE fit your new barriers, you are working with a SafeContractor approved company who employ CSCS certified installers. The especially made equipment we use ensures a perfect installation every time, leaving your site clean, tidy and very safe.





...THROUGH TO COMPLETION

CAD Drawing

Our Consultation team will come back to the office and discuss your requirements with our support team. They'll turn your requirements in to full CAD drawings of your site with the proposed products, and they'll send them over to you for your approval.



Installation

Our expert installation team will come to your site and fit your new **A-SAFE** barriers using specially designed installation equipment. They are CSCS certified, and their attention to detail ensures that they leave you with a perfect installation of your new safety system.



We'll communicate with you every step of the way, and upon completion we'll make sure you're happy with our service.

After-sales

We're confident in our barrier system, and we're sure you'll be happy when your installation is complete. We'll contact you for your feedback after a short period of time, and we'll also arrange a visit to survey the job to make sure you're 100% satisfied. We'll ask you for your feedback, or discuss any new hazards or risks that may have cropped up.



Our Mission:

To always provide customers with the best safety solutions by consistently developing and innovating; whilst supplying advanced products, unrivalled levels of service, flexible systems and packages; and employing brilliant people to deliver excellence in everything we do.



Some of our recent clients:



KUEHNE+NAGEL



MARS





	A-Safe (UK) Ltd	United Kingdom, Head Office
	A-Safe GmbH	Germany, Austria, Switzerland
	A-Safe SAS	France, Suisse Romande, Belgique (Wallonie)
	A-Safe, Inc.	United States of America
	A-Safe Pty Ltd	Australia
	A-Safe Portugal	Portugal
	A-Safe (2013) Thailand	Thailand
	A-Safe APS	Scandinavian Region, Denmark, Sweden, Norway
	A-Safe BV	Benelux Region, Belgium, Netherlands, Luxembourg
	A-Safe Italy srl	Italy

A-SAFE (UK) Ltd

Habergham Works, Ainleys Industrial Estate, Elland, Halifax HX5 9JP

Sales: +44 (0) 1422 331133 Enquiries: +44 (0) 1422 344402 F: +44 (0) 1422 323533

E: sales@asafe.com W: www.asafe.com